



SERVApump® TPA 400

Summary

The TPA400 triplex pump is good for high-pressure well service. Each pump is equipped with a chain case. The triplex pump is designed to pump cement slurries, sand-laden fluids, crude oil, acids, mud and other oil well servicing fluids.

Main Specification

Power end

Max input power400 hp
 Max rod load16 ft
 Max input speed
 (chain case output speed)1510 rpm
 Max input main shaft speed350 rpm
 Stroke5"
 Gear reduction ratio25/108

Fluid end

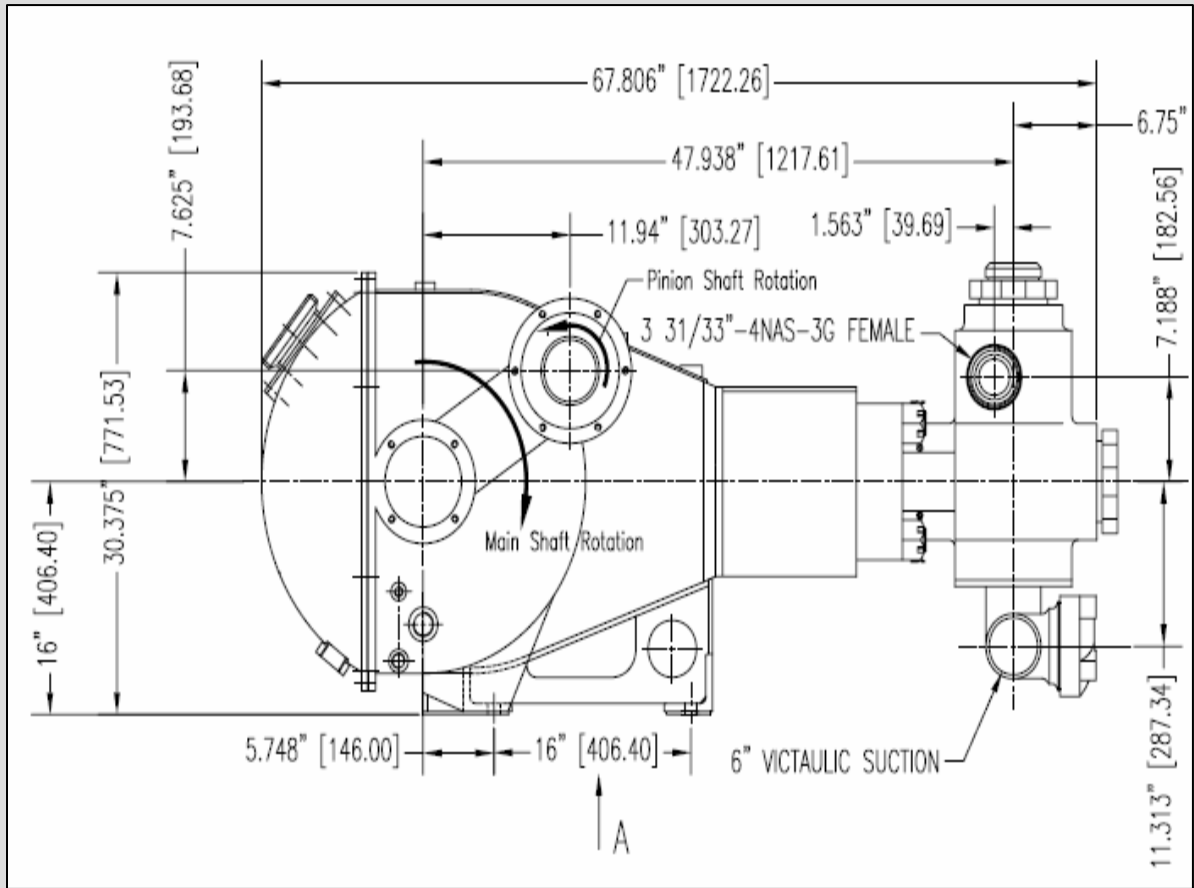
Plunger3 3/4", 4 1/2", or 5"
 Chaincase Ratio.....27/40
 Max input speed2240 rpm
 Input flangeSpicer 1700

Weight

Without chain case.....4765 lbs
 Chain case.....500 lbs

Standard Equipment and features

Eccentric/main shaft type construction
 Left or right chain case mounting
 Multiple pinion locations
 Left or right side suction and discharge connections
 Hard coated plungers
 Valve over valve fluid end
 Plunger sizes from 3.75" to 5"
 Suction manifold with Victaulic connections
 Header-ring style packing
 Center-gauge connection
 Forged alloy steel mono-block fluid end with removable suction and discharge covers
 Fabricated steel suction manifold
 Steel discharge connections
 Threaded packing nuts
 Replaceable alloy steel wing guided valves
 Replaceable urethane valve insert



SERVApump® TPA 400

Plunger Diameter In (mm)	Displacement per Revolution gal/rev (liter/rev)	41/178		102/444		162/702		237/1027		328/1417	
		gpm (m3pm)	psi (mpa)	gpm (m3pm)	psi (mp)	gpm (m3pm)	psi (mpa)	gpm (m3pm)	psi (mp)	gpm (m3pm)	psi (mpa)
3 3/4" (95.25)	.717 (2.715)	29 (.111)	10000 (68.9)	73 (.277)	7.0 90	116 (.440)	4.48 0	170 (.643)	3.0 60	235 (.890)	2.220 (15.3)
4 1/2" (114.3)	1.033 (3.909)	42 (.160)	7000 (48.3)	105 (.402)	609 0	167 (.633)	3830 (26.4)	245 (.926)	262 0	339 (1.282)	1890 (13)
5" (127)	1.275 (4.826)	52 (.198)	5500 (37.9)	149 (.492)	399 0	248 (.782)	2520 (17.4)	372 (1.144)	173 0	558 (1.583)	1250 (8.6)