



## SERVApump® TPH 400

### Summary

The Serva TPH400 triplex pumps are good for high-pressure well service. Each pump is equipped with an integral gear reduction box. The triplex pumps are designed to pump cement slurries, sand-laden fluids, crude oil, acids, mud and other oil well servicing fluids.

### Main Specification

#### Power end

Companion Flange..... 1800 Series Spicer  
 Input Spline.....3-in.—10 (7.62 cm)  
 Input Speed w18.4:1 or 8.6:1 Gears...2,400 maximum rev/min  
 Maximum Input Torque..... 7,215 ftlb  
 Maximum Input Horsepower..... 600hp  
 Maximum Rod Load.....175,800 lbf

#### Fluid End

Fluid-End Type.....Three-piece forged steel  
 Plunger Type..... Hard-surfaced  
 Valve Type.....Double stem guided, carburized  
 Valve Seats.... Carburized

Pressure Packing....High performance packing

Discharge Flange .....(1) Blank, straight with one outlet or (2) ell with two outlets

Oil System External; use air tank press

### Standard Equipment and features

Gear Train.... Steel worm and bronze ring w/ 8.6:1 ratio (standard)

Crankshaft.....Forged steel, four main bearings

Connecting Rods ...Three, forged aluminum, split caps, and insert bearings

Crossheads..... Three, cast steel

Case.....High-strength steel weldment

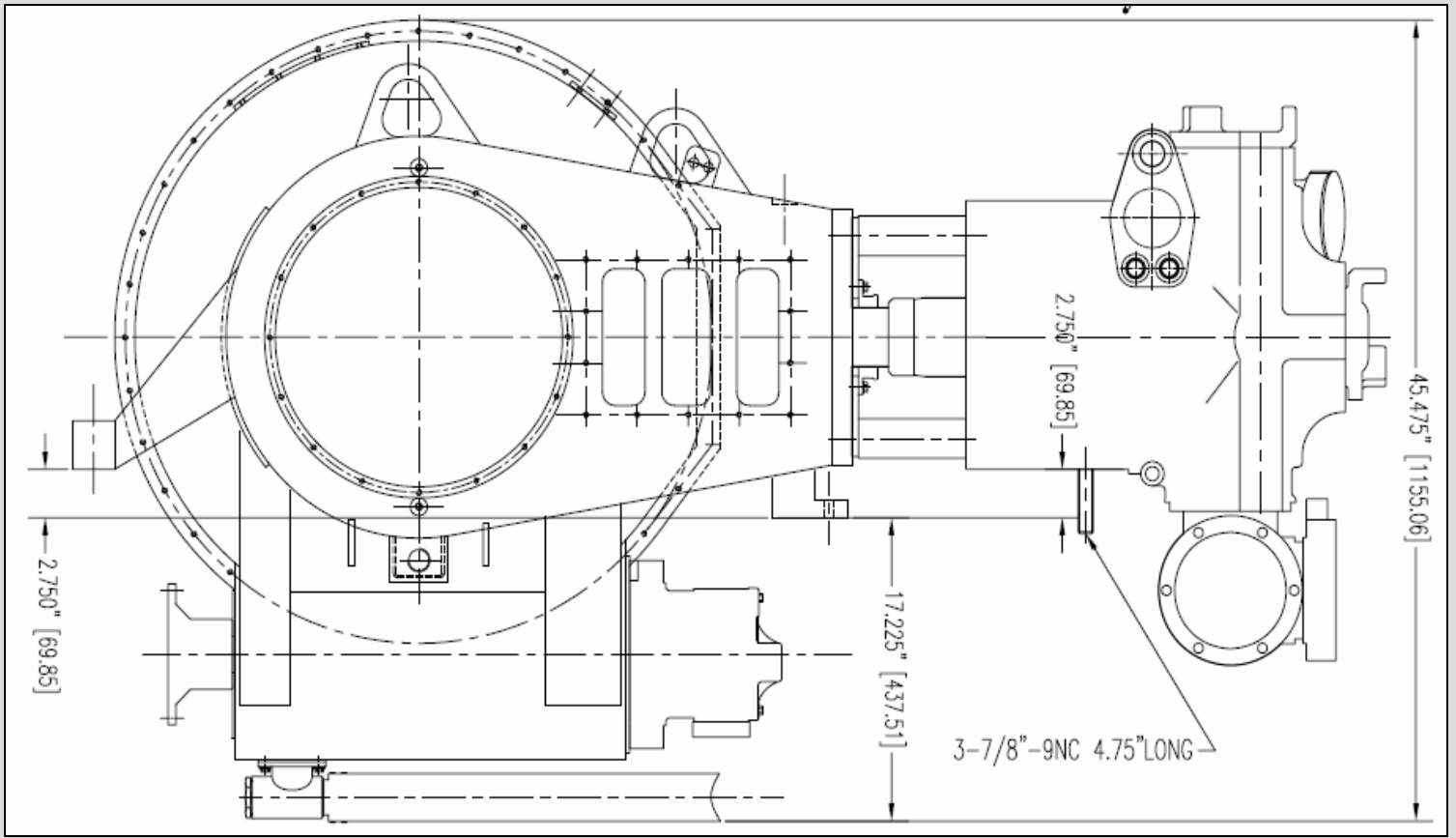
Bearing Type.....Roller and race

Oil System.. Gear pump driven off worm (std) or remote

Oil Filter..... Replaceable elements and magnetic strainer

Oil Capacity.....22 U.S. gal

Oil Pressure.....80 to 100 psi



## SERVApump® TPH 400

Plunger Diameter	Displacement per Revolution	32/275		70/598		128/1099		171/1469		244/2100	
		gpm (Lpm)	psi (mpa)	gpm (Lpm)	psi (mpa)	gpm (Lpm)	psi (mpa)	gpm (Lpm)	psi (mpa)	gpm (Lpm)	psi (mpa)
4" (101.6)	1.31 (4.94)	41.8 (158)	14000 (96.5)	91 (344)	10190 (70.3)	167 (632)	5545 (38.2)	223 (844)	4152 (28.6)	319 (1206)	2903 (20)
4 1/2" (114.3)	1.65 (6.25)	53 (200)	11200 (77.2)	115 (435)	8051 (55.5)	211 (800)	4381 (30.2)	282 (1067)	3280 (22.6)	403 (1527)	2294 (15.8)
Input Power HP(kw)		346(257)		600(447)		600(447)		600(447)		600(447)	